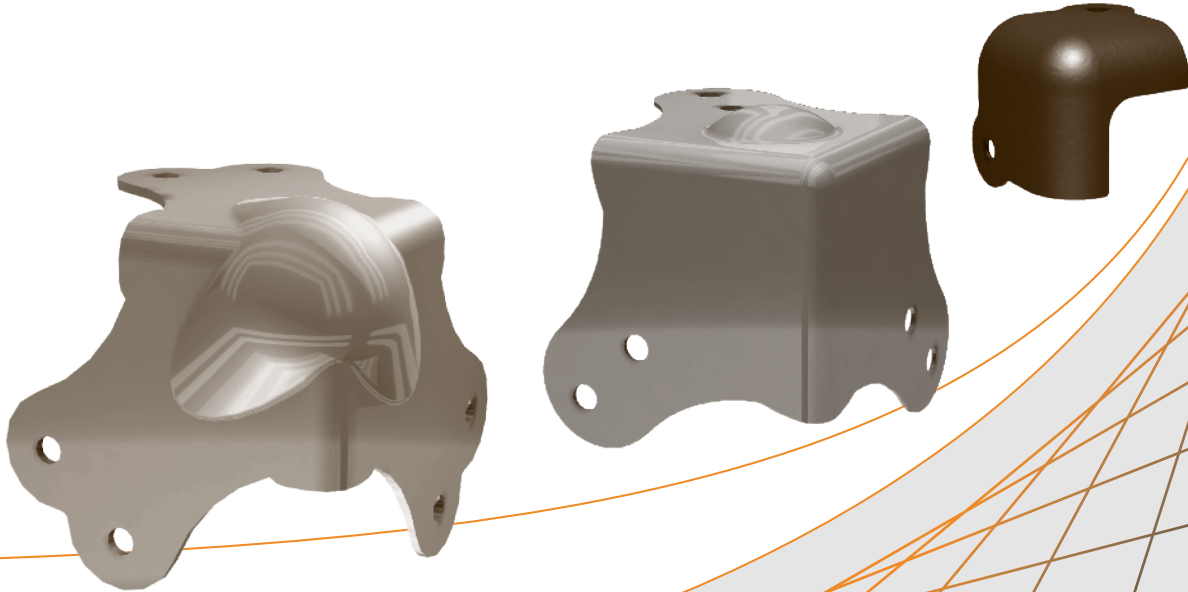
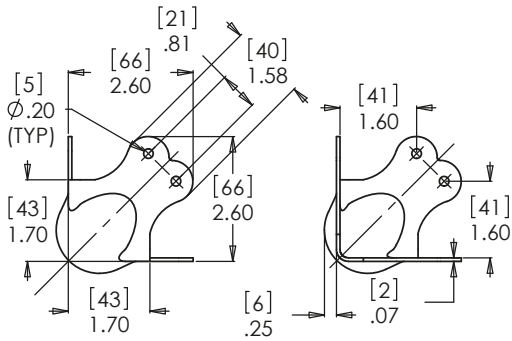


BALL - FLAT PLASTIC - CABINET - STACKABLE - BRANDING - COMBINATION CLAMP - NOTCHED

CORNERS



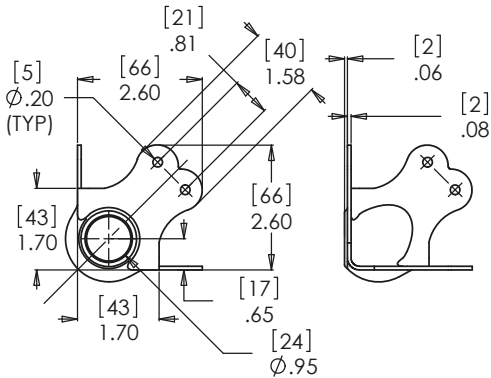
03



502-1002800 Heavy Duty Ball Corner

Mat: Steel | Finish: Zinc Plate | Wt: .11kg / .24lbs

- Industry standard heavy duty ball corner.
- 14ga steel construction.
- For use with large cases and cabinets.
- Zinc plated.



502-1014800 Heavy Duty Stacking Ball Corner

Mat: Steel | Finish: Zinc Plate | Wt: .12kg / .26lbs

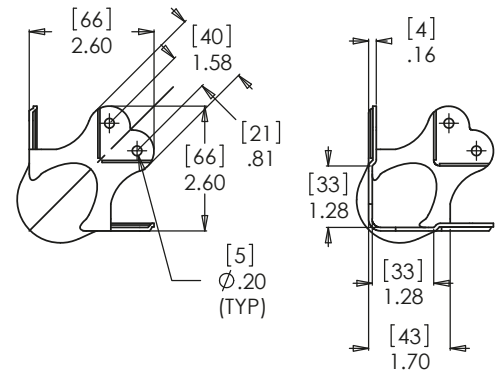
- Dimple allows stacking of cases and cabinets.
- Designed to mate with 502-1002800 to prevent shifting of stacked units.
- 14ga steel construction.
- For use with large cases and cabinets.
- Zinc plated.

502-1000800

Heavy Duty Ball Corner with Offset

Mat: Steel | Finish: Zinc Plate | Wt: .13kg/.29lbs

- Offsets in the legs fit extrusions up to 32mm / 1-1/4" in height.
- Industry standard heavy duty ball corner.
- 14ga steel construction.
- For use with large cases and cabinets.
- Zinc plated.

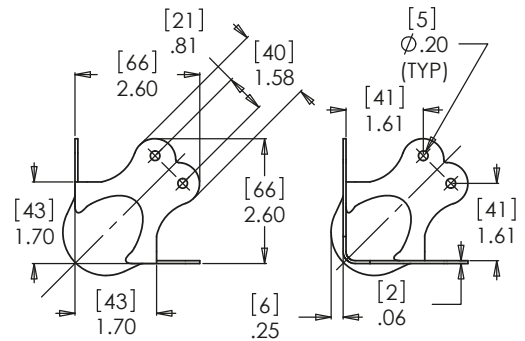


502-1003800

Medium Duty Ball Corner

Mat: Steel | Finish: Zinc Plate | Wt: .10kg/.22lbs

- Lighter gauge version of the industry standard ball corner.
- 16ga steel construction.
- For use with large cases and cabinets.
- Zinc plated.

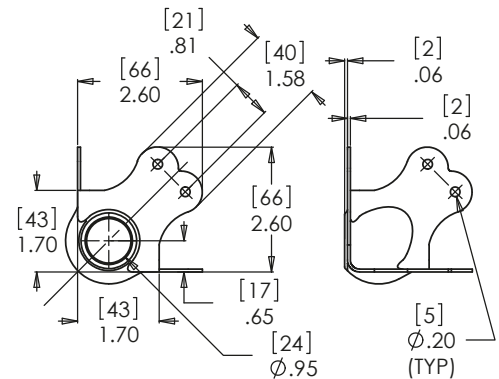


502-1015800

Medium Duty Stacking Ball Corner

Mat: Steel | Finish: Zinc Plate | Wt: .09kg/.20lbs

- Dimple allows stacking of cases and cabinets.
- Designed to mate with 502-1003800 to prevent shifting of stacked units.
- 16ga steel construction.
- For use with large cases and cabinets.
- Zinc plated.

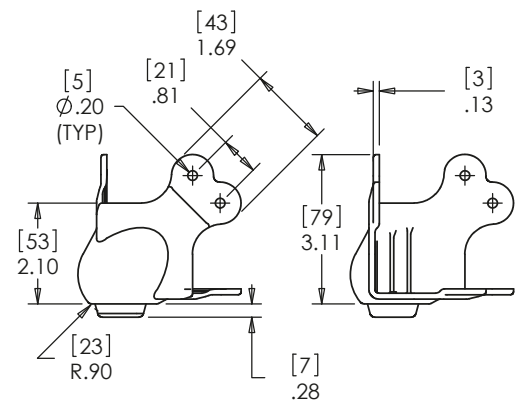


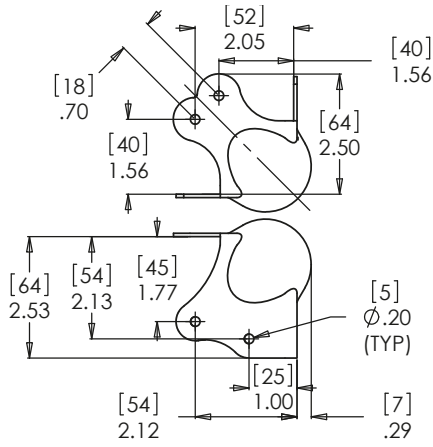
502-1460900

Light Weight Ball Corner

Mat: Plastic | Finish: Black | Wt: .12kg/.24lbs

- Engineered plastic ball corner with replaceable glide/bumper.



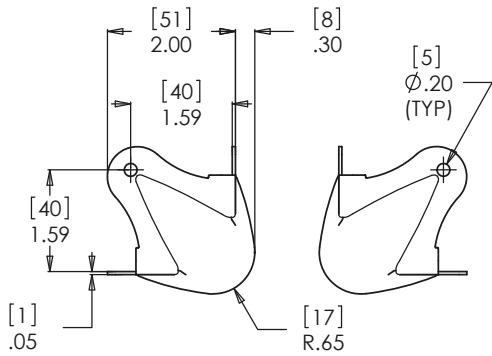


502-1009800

Combination Ball Corner and Clamp

Mat: Steel | Finish: Zinc Plate | Wt: .13kg/.29lbs

- Integrated corner and clamp for quick and easy installation and for low profile lid construction.
- 14ga steel construction.
- For use with large cases and cabinets.
- Zinc plated.

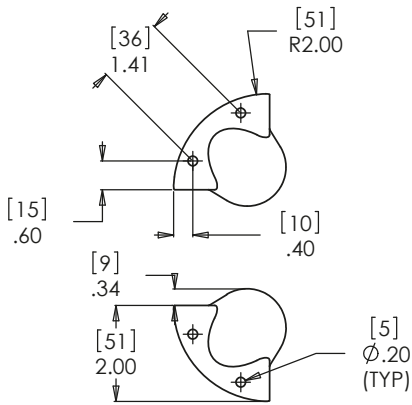


502-1245800

Medium 18 Gauge Ball Corner

Mat: Steel | Finish: Zinc Plate | Wt: .05kg/.11lbs

- For use on mid-size cases and cabinets.
- Only three mounting holes which speeds installation.
- 18ga steel construction.
- Zinc plated.

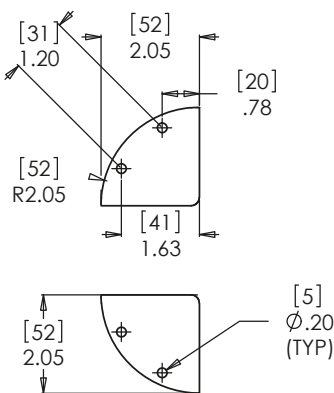


502-1069800

Medium Ball Corner

Mat: Steel | Finish: Zinc Plate | Wt: .09kg/.20lbs

- For use on mid-size cases and cabinets.
- Great for 'rock and roll' style briefcases.
- 16ga steel construction.
- Zinc plated.



502-1068800

Medium Flat Corner

Mat: Steel | Finish: Zinc Plate | Wt: .07kg/.15lbs

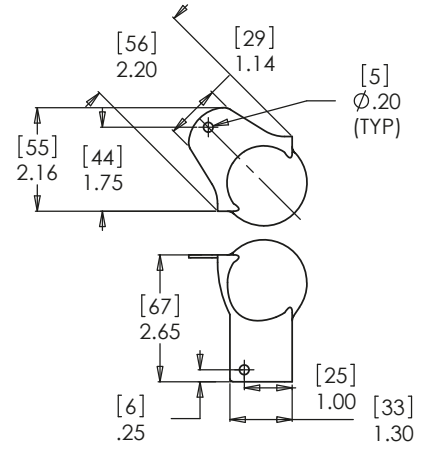
- For use on wooden or fiber cases and cabinets.
- 16ga steel construction.
- Zinc plated.

502-1031800

Medium Combination Ball Corner and Clamp

Mat: Steel | Finish: Zinc Plate | Wt: .07kg / .17lbs

- Ball corner and clamp integrated into one.
- Speeds up case construction.
- Only 3 mounting holes.
- 16ga steel construction.
- Zinc plated.

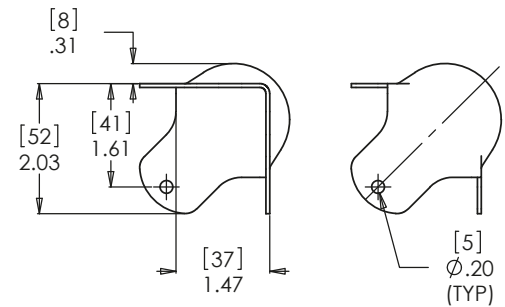


502-1027800

Three Hole Medium Ball Corner

Mat: Steel | Finish: Zinc Plate | Wt: .06kg/.13lbs

- For use on mid-size cases and cabinets.
- Only three mounting holes speed installation.
- 16ga steel construction.
- Zinc plated.

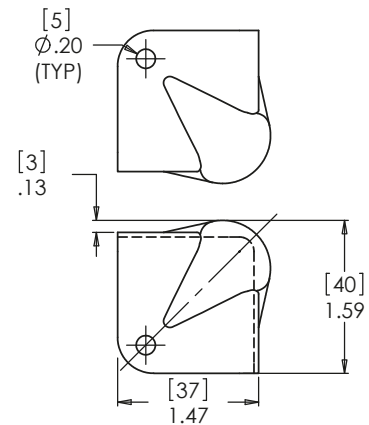


502-1210800

Medium Light Duty Ball Corner

Mat: Steel | Finish: Zinc Plate | Wt: .04kg / .09lbs

- For use on mid-size cases and cabinets.
- Special design incorporates ball feature into a smaller corner.
- 19ga steel construction.
- Zinc plated.

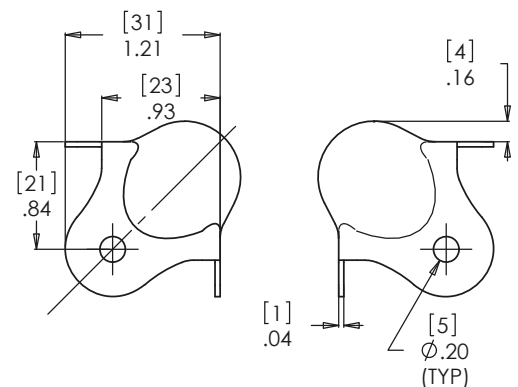


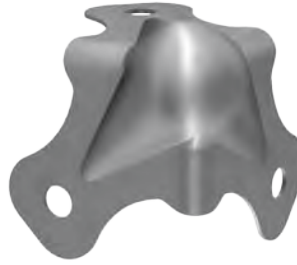
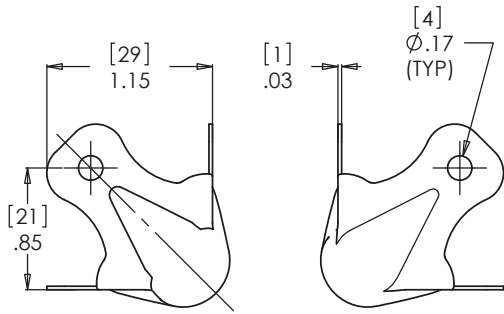
502-1346800

Small Light Duty Ball Corner

Mat: Steel | Finish: Zinc Plate | Wt: .04kg / .09lbs

- For use on lighter weight applications such as smaller equipment cases or vinyl covered wood cases where application sidewalls need added protection.
- 20ga steel construction.
- Zinc plated.



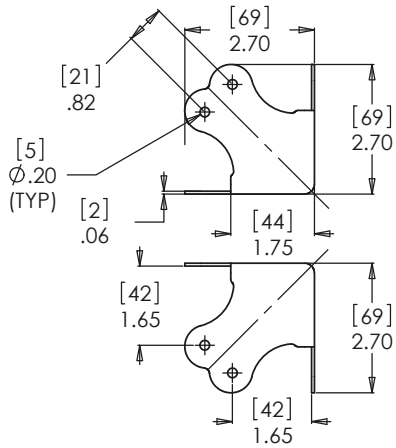


502-1344801

Small Light Duty Ball Corner

Mat: Steel | Finish: Nickel Plate | Wt: .01kg / .02lbs

- For use on lighter weight applications such as smaller equipment cases or vinyl covered wood cases where application sidewalls need added protection.
- 22ga steel construction.
- Nickel plated.

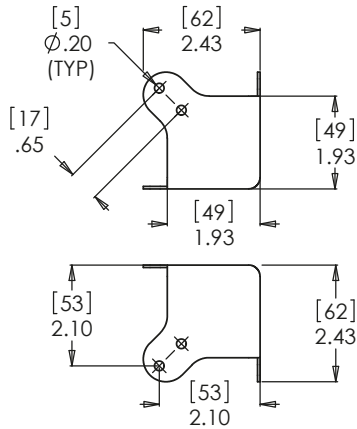


502-1042800

Large Flat Corner

Mat: Steel | Finish: Zinc Plate | Wt: .10kg / .22lbs

- Flat corner used on large cases or cabinets.
- 16ga steel construction.
- Zinc plated.

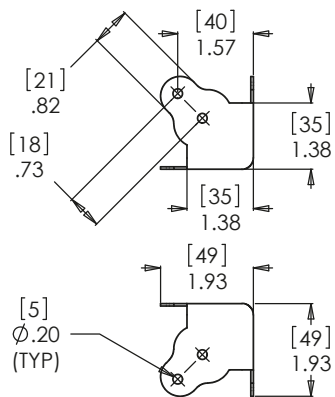


502-1045800

Three Leg Large Flat Corner

Mat: Steel | Finish: Zinc Plate | Wt: .10kg / .22lbs

- Flat corner used on large or mid-size cases or cabinets.
- 16ga steel construction.
- Zinc plated.



502-1050800

Three Leg Medium Flat Corner

Mat: Steel | Finish: Zinc Plate | Wt: .07kg / .15lbs

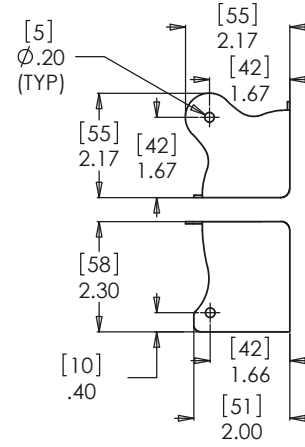
- Mid size flat corner used on heavier cases or cabinets.
- 14ga steel construction.
- Zinc plated.

502-1020800

Combination Corner and Clamp

Mat: Steel | Finish: Zinc Plate | Wt: .07kg / .15lbs

- Corner and clamp is combined to speed up production.
- Standard cases need four fewer clamps.
- 18ga steel construction.
- Zinc plated.

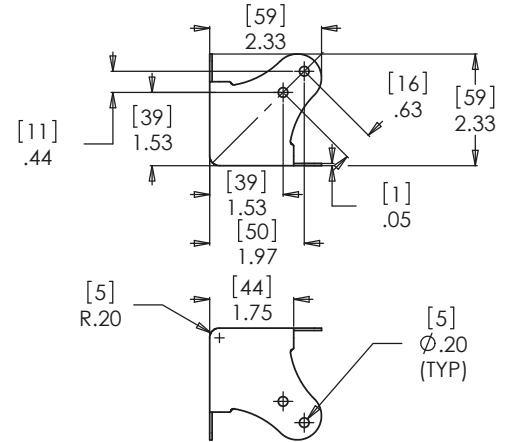


502-1036800

Large Flat Corner

Mat: Steel | Finish: Zinc Plate | Wt: .07kg / .15lbs

- Flat corner used on mid-size cases or cabinets.
- Designed to match styles with 502-1026800 and 502-1040800 corners.
- 18ga steel construction.
- Zinc plated.

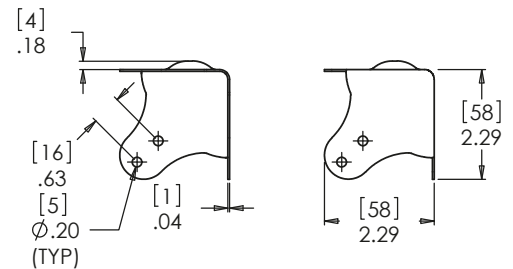


502-1026800

Large Flat Corner with Stacking Foot

Mat: Steel | Finish: Zinc Plate | Wt: .07kg / .15lbs

- Flat corner used on mid-size cases or cabinets.
- Foot feature keeps application off the floor, protecting the bottom of the case or cabinet.
- Stacking foot mates with 502-1040800 and 502-1039800 corners.
- Designed to match styles with 502-1036800 and 502-1040800.
- 18ga steel construction.
- Zinc plated.

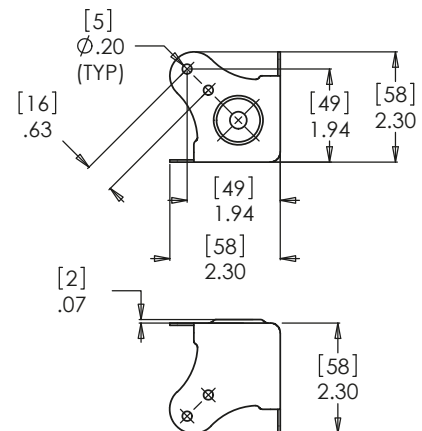


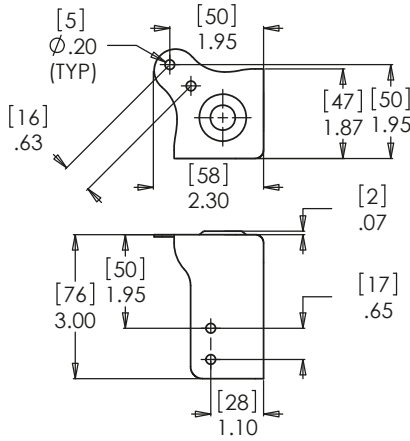
502-1040800

Large Flat Corner with Stacking Dimple

Mat: Steel | Finish: Zinc Plate | Wt: .07kg / .15lbs

- Flat corner with dimple used on mid-size cases or cabinets.
- Formed dimple allows for stacking of cases or cabinets, or can be used as a foot.
- Stacking dimple mates with 502-1026800 corner.
- Designed to match styles with 502-1026800 and 502-1036800.
- 18ga steel construction.
- Zinc plated.



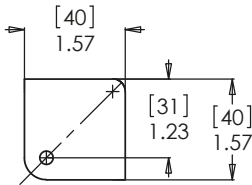
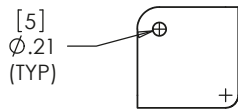


502-103980

Combination Corner and Clamp with Stacking Dimple

Mat: Steel | Finish: Zinc Plate | Wt: .07kg / .15lbs

- Corner and clamp is combined to speed up production.
- Formed dimple allows for stacking of cases or cabinets, or can be used a foot.
- Stacking dimple mates with 502-1026800 corner.
- 18ga steel construction.
- Zinc plated.

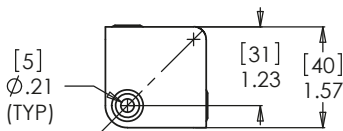
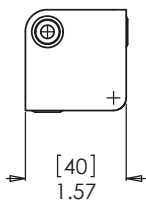


502-120580

Flat Corner

Mat: Steel | Finish: Zinc Plate | Wt: .04kg / .09lbs

- Industry standard lighter duty flat corner.
- For use on briefcases or lighter weight cases and cabinets.
- 19ga steel construction.
- Zinc plated.

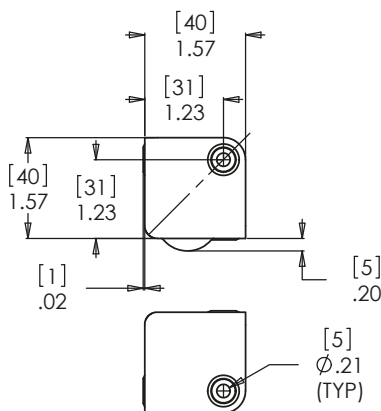


502-120480

Flat Corner with Rivet Protectors

Mat: Steel | Finish: Zinc Plate | Wt: .04kg / .09lbs

- Lighter duty flat corner.
- For use on briefcases or lighter weight cases and cabinets.
- Rivet protectors help to keep rivets from getting damaged.
- 19ga steel construction.
- Zinc plated.



502-121480

Flat Corner with Stacking Foot and Rivet Protectors

Mat: Steel | Finish: Zinc Plate | Wt: .04kg / .09lbs

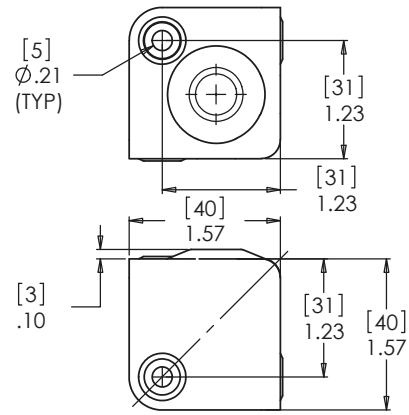
- Lighter duty flat corner.
- For use on briefcases or lighter weight cases and cabinets.
- Rivet Protectors help keep rivets from getting damaged.
- Stacking foot can be used to keep application off the ground, or mates with 502-1217800.
- 19ga steel construction.
- Zinc plated.

502-1217800

Flat Corner with Stacking Dimple and Rivet Protectors

Mat: Steel | Finish: Zinc Plate | Wt: .04kg / .09lbs

- Lighter duty flat corner.
- For use on briefcases or lighter weight cases and cabinets.
- Rivet Protectors help keep rivets from getting damaged.
- Stacking dimple can be used to keep application off the ground, or mates with 502-1214800.
- 19ga steel construction.
- Zinc plated.

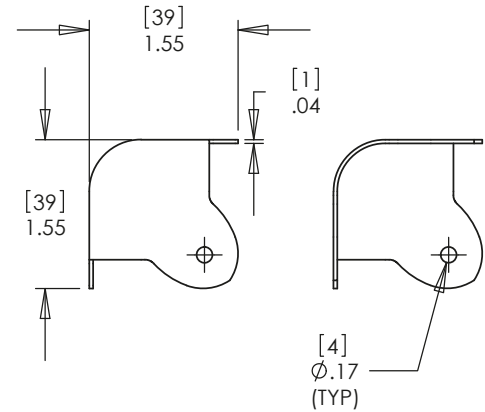


502-1300801

Three Leg Cabinet Corner

Mat: Steel | Finish: Nickel Plate | Wt: .03kg / .07lbs

- Industry standard three leg corner for use on vinyl or carpet covered cabinets.
- Designed to match 502-1321801 and be used on the back corners of applications where 502-1321801 is used on the front.
- 18ga steel construction.
- Available as a special order item. Minimum quantity may apply.

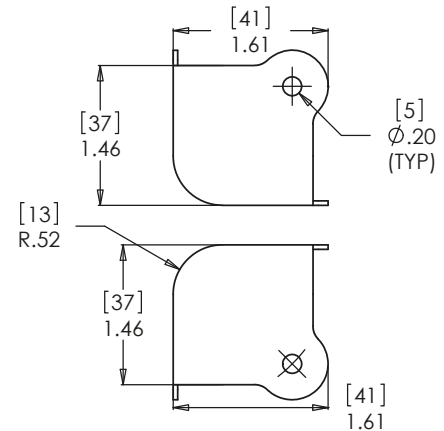


502-1363900

Three Leg Cabinet Corner

Mat: Steel | Finish: Black | Wt: .03kg / .07lbs

- Industry standard three leg corner for use on vinyl or carpet covered cabinets.
- Designed to be used on the back of application where 502-1361801 or 502-1362801 are used on the front.
- 18ga steel construction.
- Black painted.

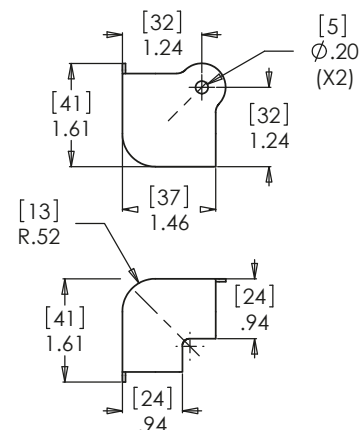


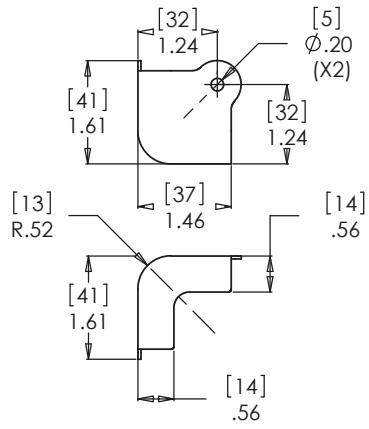
502-1361900

Two Leg Cabinet Corner with Lip

Mat: Steel | Finish: Black | Wt: .03kg / .07lbs

- Two leg amp corner for use on applications where total material thickness is 3/4" or greater.
- For use on vinyl or carpet covered cabinets.
- Corner lip wraps around the inside edge of the cabinet.
- Designed to be used in conjunction with 502-1363900.
- 18ga steel construction.
- Black painted.

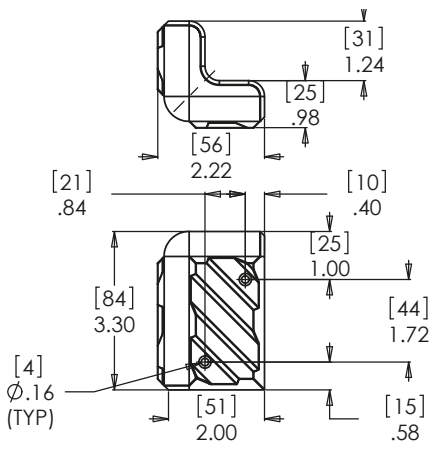




502-1362900 Three Leg Cabinet Corner

Mat: Steel | Finish: Black | Wt: .02kg / .05lbs

- Two leg amp corner for use on applications where total material thickness is 1/2" or greater.
- For use on vinyl or carpet covered cabinets.
- Designed to be used in conjunction with 502-1363900.
- 18ga steel construction.
- Black painted.



502-1400900 Large Plastic Stacking Corner

Mat: Plastic | Finish: Black | Wt: .02kg / .04lbs

- Made from shatter resistant high density plastic.
- Ridges allow stacking of cases, cabinets or corner can be used as a foot.
- Beveled edges prevent snagging on objects.



