



Laminate Panel Systems

TCH offers a full line of laminated composite panels in a variety of sizes. The standard size is typically 4x8' but panels are available up to 5x12'. Items such as ABS plastic, HDPE, FRP, Aluminum and high pressure decorative laminates are part of the TCH face material offering. For substrates we use such items as Birch, Spruce, Luan, Fir, OSB, Particle board, EPS, Gypsum and many others.

We cater to many industrial users and applications. Interior walls, exterior walls, floor, door and roof panel systems, case systems, truck bodies and clean rooms to name a few.

At TCH we have the ability and resources to customize, modify and/or adapt to most applications or designs.

We carry a wide array of color choices. Colors are available for smooth/textured fiberglass, and hair cell textured ABS.

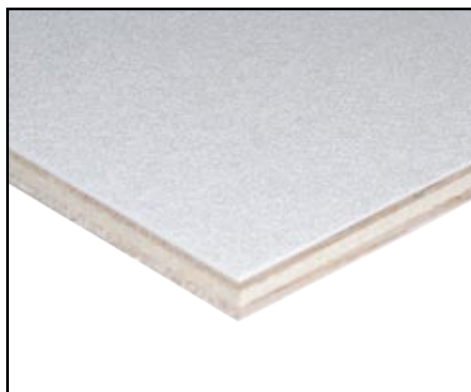
Aluminum stucco also available.

Please note: Certain products & colors may require a minimum order quantity and lead time.



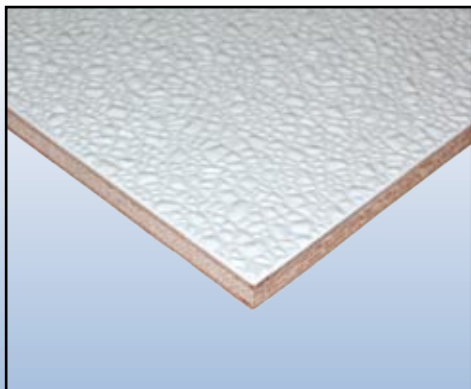
Laminate Panel Systems

PLYWOOD CORE PRODUCTS



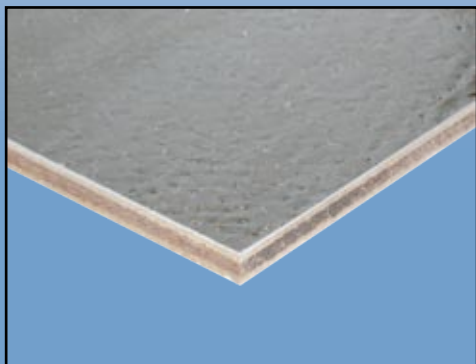
Plywood + ABS

- Plywood core with ABS plastic skin
- Birch Core, Luan Core, Russian Birch Core, Fir Core, Poplar Core, Spruce Core and Plywood Cores available in various thicknesses
- ABS skin available in a wide assortment of colors



Plywood + FRP

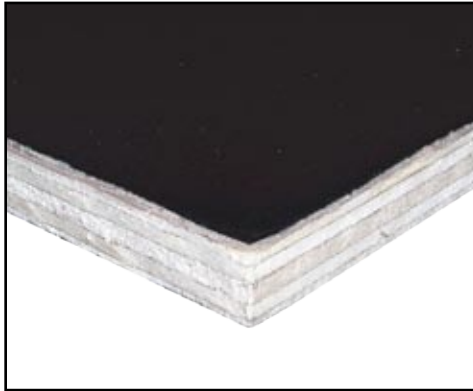
- Plywood core with FRP skin
- Birch Core, Luan Core, Russian Birch Core, Fir Core, Poplar Core, Spruce Core and Plywood Core available in various thicknesses
- FRP skin available in a wide assortment of colors
- Available in smooth and pebble finishes
- Stock colors are typically white and black



Plywood + Aluminum

- Plywood core with aluminum skin
- Birch Core, Luan, Russian Birch, Fir, Poplar, Spruce and Plywood Cores available in various thicknesses
- Assorted colors of smooth aluminum available in 0.010-0.025" thicknesses
- Clear or black epoxy primed "embossed stucco" textured aluminum available in either 0.025" or 0.032" thicknesses

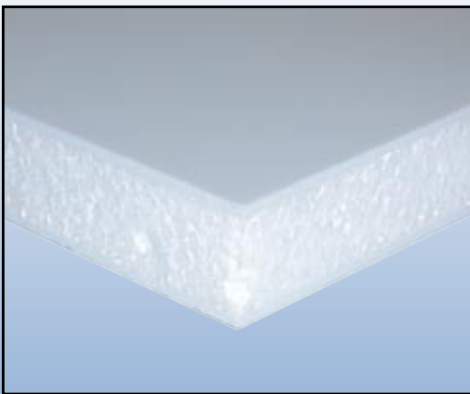
Laminate Panel Systems



Plywood + High Pressure Laminate

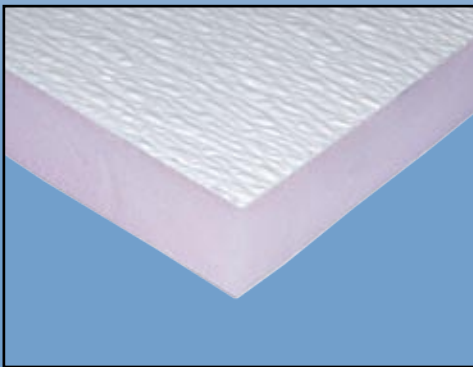
- Plywood core with High Pressure Laminate skin
- Birch Core, Luan Core, Russian Birch Core, Fir Core, Poplar Core, Spruce Core and Plywood Core available in various thicknesses
- High Pressure Laminate skin available in a wide assortment of colors

FOAM CORE PRODUCTS



EPS + HDPE

- EPS (Expanded Polystyrene) core with HDPE (High Density Polyethylene) skin
- EPS core thicknesses typically range from 1/2"-12"
- HDPE skin available in a wide assortment of colors
- This laminate combines rigidity with low weight



Extruded Styrofoam + FRP

- Extruded Styrofoam core with textured FRP skin
- Extruded Styrofoam core thicknesses typically range from 3/4"-3"
- This laminate combines rigidity with low weight

Laminate Panel Systems

FLUTED POLYPROPYLENE CORE PRODUCTS



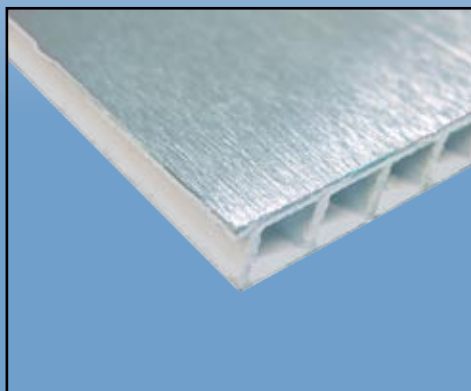
Fluted Polypropylene + ABS

- Fluted polypropylene core with ABS plastic skin
- Polypropylene core available in 4,5,6,8, and 10mm thicknesses, typically in black or white
- ABS skin available in a large range of colors



Fluted Polypropylene + FRP

- Fluted polypropylene core with FRP skin
- Polypropylene core available in 4,5,6,8, and 10mm thicknesses, typically in black or white
- FRP skin available in a wide array of colors

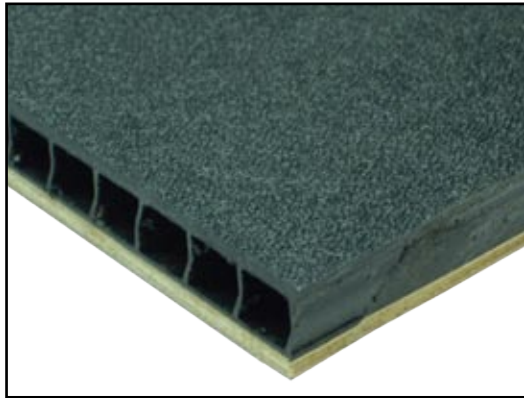


Fluted Polypropylene + Aluminum

- Fluted polypropylene core with aluminum skin
- Polypropylene core available in 4,5,6,8, and 10mm thicknesses, typically in black or white

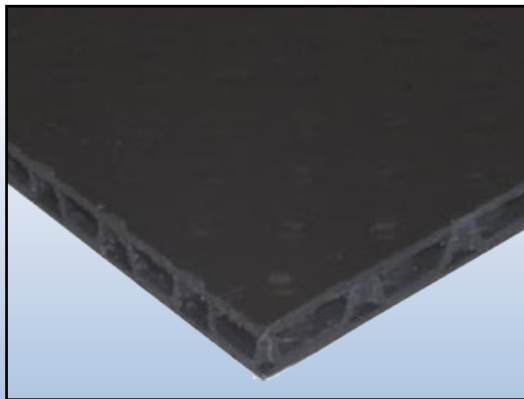
Laminate Panel Systems

TRI-LAMINATE PRODUCTS



Pozi-lite

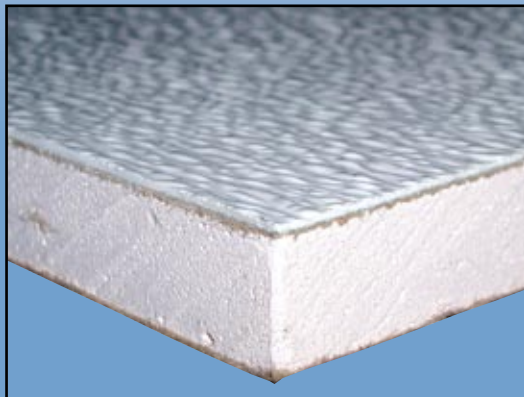
- Economical alternative to conventional plywood laminate
- 3 Layer construction: Textured ABS face sheet, polypropylene centre core, and plywood backer board
- 30% Lighter than conventional plywood laminate
- Centre core is resistant to most chemicals
- Can be worked with conventional tools
- Sold in 4 ft. x 8ft. sections
- Available in 15 colors



The Board

- A strong, lightweight alternative to conventional plywood
- 44% Lighter than conventional plywood laminate
- Recyclable polypropylene tri-laminate construction
- 100% Waterproof and resistant to most chemicals
- Can be worked with conventional tools
- Thermoformed centre layer with hermetically-sealed air-loaded cells provides non directional strength
- Sold in 62.5" x 89" sheets

WALLBOARD CORE PRODUCTS



Wallboard + FRP

- High quality textured FRP skins laminated to moisture-resistant gypsum board
- Ideal for use in portable building manufacturing, commercial kitchens and bathroom
- Inside and outside corners and batten profiles are available
- Other trim profiles available by special order (minimums required)
- Sold in 4 ft. x 8 ft. sheets

Laminate Panel Systems

SKIN SHEET STOCK

- **ABS SHEET**
- **FRP SHEET**
- **ALUMINUM SHEET**
- **HDPE SHEET**
- **HIGH PRESSURE DECORATIVE LAMINATE SHEET**



Sheet stock available in a wide range of colors to suit your needs. Please consult with your customer service representative for details.

Please note: Colors not exactly as shown.

TCH cannot be held responsible for occasional color variations in laminate due to dye lot variation.