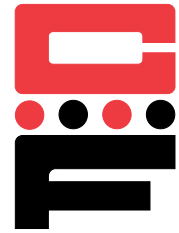




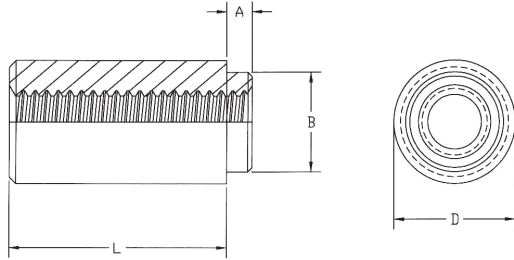
NEW

Reel Mounted Spacers and Nuts

Series CRM



CRM Reel Mount nuts and spacers provide a low-installed-cost solution for surface mount hardware. The fasteners are fed from the recyclable reel using “pick and place” equipment and oriented prior to the wave soldering operation.

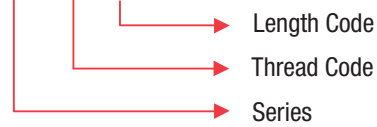


Series	Material	Finish
CRM	Carbon Steel	Electro Tin Plated, ASTM B545, Class A w/ Preservative Coating

Thread: Internal 2B, ANSI B1.1 (6H, ANSI/ASME B1.13M).

Part Number Structure:

CRM- 440 - 4



Dimensions & Specifications

INCH (in.)	Thread Size	Series	Thread Code	Thru Hole +.004 -.003	L Length ± .005 in.				A Max.	Min.	+.003 -.000	B Max.	D ±.005	Min. Solder Pad ø		
					.062	.125	.250	.375								
	#2-56	CRM	256		-2	-4	-8	-12	.060	.060	.147	.142	.219	.244		
	#4-40	CRM	440		-2	-4	-8	-12	.060	.060	.166	.161	.219	.244		
	#6-32	CRM	632		-2	-4	-8	-12	.060	.060	.213	.208	.281	.306		
	#8-32	CRM	832		-2	-4	-8	-12	.060	.060	.250	.245	.344	.369		
		CRM		.116	-2	-4	-8	-12	.060	.060	.166	.161	.219	.244		
		CRM		.143	-2	-4	-8	-12	.060	.060	.213	.208	.281	.306		
METRIC (mm)	Thread Size	Series	Thread Code	Thru Hole +.10 -.08	L Length ± .13 mm					A Max.	Min.	+.08 -.00	B Max.	D ±.13	Min. Solder Pad ø	
					2	3	4	6	8							10
	M2 X 0.4	CRM	M2		-2	-3	-4	-6	-8	-10	1.53	1.53	3.73	3.6	5.56	6.2
	M2.5 X 0.45	CRM	M2.5		-2	-3	-4	-6	-8	-10	1.53	1.53	4.22	4.09	5.56	6.2
	M3 X 0.5	CRM	M3		-2	-3	-4	-6	-8	-10	1.53	1.53	4.22	4.09	5.56	6.2
	M3.5 X 0.6	CRM	M3.5		-2	-3	-4	-6	-8	-10	1.53	1.53	5.41	5.28	7.14	7.77
	M4 X 0.7	CRM	M4		-2	-3	-4	-6	-8	-10	1.53	1.53	6.35	6.22	8.74	9.37
		CRM		3.6	-2	-3	-4	-6	-8	-10	1.53	1.53	5.41	5.28	7.14	7.77
		CRM		4.2	-2	-3	-4	-6	-8	-10	1.53	1.53	6.35	6.22	8.74	9.37

Note: All Items Subject To Minimum Order

Number of Parts per Reel / Pitch (mm) for Each Size – as per EIA standards (13” reels/24mm wide)

Thread Size & Thru Hole Size	Length						
	2	3	4	6	8	10	12
256, 440, 632,	1500 / 12	--	1000 / 12	--	650 / 12	--	300 / 16
832, .116, .143	1100 / 16	--	800 / 16	--	500 / 16	--	300 / 16
M2, M2.5, M3, M3.5, 3.6	1500 / 12	1000 / 12	900 / 12	650 / 12	375 / 16	300 / 16	--
M4, 4.2	1100 / 16	800 / 16	675 / 16	500 / 16	375 / 16	300 / 16	--